

TATA STEEL
WeAlsoMakeTomorrow

**TATA
AGRICO**



Maximum Retail Price
CONSUMABLES

w.e.f 1st July'22

INDEX



Abrasive Wheels

03



Drill Bits

04



Electrodes

05



TATA MIG Wire

06




Self Drilling Screws


06





Nails


07


ABRASIVE WHEEL CUTTING WHEEL				
HSN - 68042210				
Item Code	Material Description	No. of pcs per Box	Rate / Pc* (₹)	Rate/Box* (₹)
ACW401	4" x 1 mm	50	25	1,250
ACW501	5" x 1.2 mm	50	40	2,000
ACW703	7" x 3 mm	10	100	1,000
ACW143	14" x 3mm	25	250	6,250

ABRASIVE WHEEL GRINDING WHEEL				
HSN - 68042210				
Item Code	Material Description	No. of pcs per Box	Rate / Pc* (₹)	Rate/Box* (₹)
AGW404	4" x 4 mm	30	49	1,470
AGW 406	4" x 6 mm	25	55	1,375
AGW506	5" x 6 mm	15	90	1,350
AGW707	7" x 6.5 mm	10	150	1,500
AGW907	9" Grinding Wheel	12	330	3,960

DIAMOND SAW BLADE				
HSN - 82022000				
Item Code	Material Description	No. of pcs per packet	Rate / Pc* (₹)	Rate/ packet* (₹)
DBS400	4 inch -SEG	10	160	1,600
DSC400	4 inch -CON RIM	10	175	1,750
DST400	4 inch -Turbo	10	175	1,750
DBS500	5 inch -SEG	10	215	2,150
DSC500	5 inch -CON RIM	10	225	2,250

TCT BLADE				
HSN - 82022000				
Item Code	Material Description	No. of pcs per Box	Rate / Pc* (₹)	Rate/ packet* (₹)
TCT430	4 inch - 30 Teeth	10	230	2,300
TCT440	4 inch - 40 Teeth	10	235	2,350
TCT530	5 inch - 30 Teeth	10	260	2,600
TCT540	5 inch - 40 Teeth	10	265	2,650

ABRASIVE WHEEL CUTTING WHEEL				
HSN - 68042210				
Item Code	Material Description	No. of pcs per Box	Rate / Pc* (₹)	Rate/ packet* (₹)
ACW402	4" Cutting Wheel Black - Half blotter - OSA	50	25	1,250
ACG401	4" Cutting Wheel Green 2 Net - OSA	50	25	1,250
ACR401	4" Cutting Wheel Red 2 Net - OSA	50	25	1,250
ACB143	Cutting Wheel Black ECO-14 Inch	25	245	6,125
ACG142	Cutting Wheel Green -14 inch	25	250	6,250
ACW403	4.5" Cutting Wheel OSA	50	40	2,000
CWM903	9" Cutting Wheel -Metal OSA	20	175	3,500
CWS903	9" Cutting Wheel -SS - OSA	20	185	3,700
CWM703	7" Cutting Wheel - Metal - OSA	40	115	4,600
CWS703	7" Cutting Wheel - SS - OSA	40	125	5,000

FLAP DISC - GRINDING & POLISHING				
HSN - 82022000				
Item Code	Material Description	No. of pcs per packet	Rate / Pc* (₹)	Rate/ packet* (₹)
AFD436	100MM - Grits-36	20	60	1,200
AFD460	100MM - Grits-60	20	60	1,200
AFD480	100MM - Grits-80	20	60	1,200
AFD412	100MM - Grits-120	20	60	1,200

DRILL BITS MASONRY DRILL BITS HSN - 82075000					
Item Code	Material Description	Type of finish	No. of pcs per Box	Rate / Pc* (₹)	Rate/ Box* (₹)
DBC003	3.00 mm - 1/8	Nickel	10	83	830
DBC004	4.00 mm - 5/32	Nickel	10	93	930
DBC005	5.00 mm - 3/16	Nickel	10	97	970
DBC006	6.00 mm - 15/64	Nickel	10	119	1,190
DBC065	6.5 mm - 1/4	Nickel	10	110	1,100
DBC008	8 mm - 5/16	Nickel	10	218	2,180
DBC010	10.00 mm - 3/8	Nickel	10	247	2,470
DBC012	12.00 mm - 15/32	Nickel	5	316	1,580



DRILL BITS GRANITE DRILL BITS HSN - 82075000					
Item Code	Material Description	Type of finish	No. of pcs per Box	Rate / Pc* (₹)	Rate/ Box* (₹)
DBM003	3.00 mm - 1/8	Nickel Chrome	10	133	1,330
DBM004	4.00 mm - 5/32	Nickel Chrome	10	156	1,560
DBM005	5.00 mm - 3/16	Nickel Chrome	10	165	1,650
DBM055	5.50 mm - 7/32	Nickel Chrome	10	207	2,070
DBM006	6.00 mm - 15/64	Nickel Chrome	10	234	2,340
DBM065	6.5 mm - 1/4	Nickel Chrome	10	202	2,020
DBM007	7.00 mm - 9/32	Nickel Chrome	10	276	2,760
DBM008	8 mm - 5/16	Nickel Chrome	10	358	3,580
DBM009	9 mm - 11/32	Nickel Chrome	10	460	4,600
DBM010	10 mm - 3/8	Nickel Chrome	10	418	4,180
DBM011	11 mm - 7/16	Nickel Chrome	5	579	2,895
DBM012	12 mm - 15/32	Nickel Chrome	5	524	2,620
DBM013	13 mm - 1/2	Nickel Chrome	5	515	2,575



ELECTRODES STAINLESS STEEL ELECTRODES HSN - 83111000				
Item Code	Material Description	MOQ- Quantity in Master Box	No. of pcs per Packet	Rate/ Packet* (₹)
SSE001	TATA - SS308L 2.50 X 350 mm	5 Packets	84	1,330
SSE002	TATA - SS308L 3.15 X 350 mm	5 Packets	56	1,230
SSE003	TATA - SS308L 4.00 X 350 mm	5 Packets	38	1,230



ELECTRODES LOW HYDROGEN CARBON STEEL ELECTRODE - ISI GRADE Radiographic Quality HSN - 83111000				
Item Code	Material Description	MOQ- Quantity in Master Box	No. of pcs per Packet	Rate/ Packet* (₹)
LHE001	TATA - E7018 2.50 X 350 mm	4 Packets	168	1,271
LHE002	TATA - E7018 3.15 X 450 mm	4 Packets	115	1,500
LHE003	TATA - E7018 4.00 X 450 mm	4 Packets	75	1,500
LHE004	TATA - E7018 5.00 X 450 mm	4 Packets	50	1,429



ELECTRODES
 MILD STEEL ELECTRODE - ISI GRADE
Radiographic Quality
HSN - 8311000


Item Code	Material Description (mm)	MOQ-Quantity in Master Box	No. of pcs per Packet	Rate/Packet* (₹)
MSE011	TATA - E6013 2.50 X 350	12 Packets	125	541
MSE012	TATA - E6013 3.15 X 350	12 Packets	90	555
MSE014	TATA - E6013 3.15 X 450	12 Packets	90	741
MSE015	TATA - E6013 4.00 X 450	12 Packets	60	749
MSE016	TATA - E6013 5.00 X 450	12 Packets	40	755
MSE013	TATA - E6013NP 3.20 X 350	4 Packets	155	1,100
MSE027	TATA - E6013NP 2.50 X 350	4 Packets	265	1,158
MSE028	TATA - E6013NP 4.00 X 450	4 Packets	85	1,158
MSE017	TATA - E6013 2.50 X 350	8 Packets	125	556
MSE018	TATA - E6013 3.15 X 350	8 Packets	90	556
MSE019	TATA - E6013 3.15 X 450	8 Packets	90	742
MSE020	TATA - E6013 4.00 X 450	8 Packets	60	751
MSE021	TATA - E6013 5.00 X 450	8 Packets	40	756
MSE022	TATA - E6013JK 3.15 X 350	12 Packets	85	622
MSE026	TATA - E6013JK 4.00 X 450	12 Packets	55	822
MSE023	TATA - E6013 Bluebond 2.50 X 350	12 Packets	100	543
MSE024	TATA - E6013 Bluebond 3.15 X 450	6 Packets	90	944
MSE025	TATA - E6013 Bluebond 4.00 X 450	6 Packets	60	944
MSE029	TATA-E6013 JK 3.15X350	8 Packets	85	950
MSE030	TATA-E6013 JK 4.00X450	8 Packets	55	950

ELECTRODES
 MILD STEEL ELECTRODE - NON ISI GRADE
HSN - 8311000


Item Code	Material Description	MOQ-Quantity in Master Box	No. of pcs per Packet	Rate/Packet* (₹)
MNS001	TATA - NS E6013 2.50 X 350 mm	12 Packets	100	428
MNS002	TATA - NS E6013 2.90 X 350 mm	12 Packets	90	499
MNS003	TATA - NS E6013 2.90 X 450 mm	12 Packets	90	656
MNS004	TATA - NS E6013 3.75 X 450 mm	12 Packets	60	671
MNS005	TATA NS-E6013 2.70X350MM	12 Packets	90	472
MNS006	TATA NS-E6013 2.70X450 mm	12 Packets	90	615
MNS007	TATA NS-E6013 2.90X350 mm	8 Packets	90	499
MNS008	TATA NS-E6013 3.75X450 mm	8 Packets	60	671
MNS009	TATA NS-E6013 2.50X350 mm	8 Packets	100	428
MNS010	TATA NS-E6013 2.90X450 mm	8 Packets	90	656

TATA MIG WIRE

HSN - 83111000



Item Code	Material Description	Spool Size	MOQ- (No. of spools)	Rate/Box* (₹)
MMW001	TATA MIG Wire 0.80mm	300 mm	1	3,900
MMW002	TATA MIG Wire 1.20mm	300 mm	1	3,900
MMW003	TATA MIG Wire 0.80mm	270 mm	1	3,900
MMW004	TATA MIG Wire 1.20mm	270 mm	1	3,900
MMW005	TATA MIG Wire 1.00mm	300 mm	1	3,900
MMW006	TATA MIG Wire 1.60mm	300 mm	1	3,900
MMW007	TATA MIG Wire 1.00mm	270 mm	1	3,900
MMW008	TATA MIG Wire 1.60mm	270 mm	1	3,900

SELF DRILLING SCREWS (TS)

GREY RUSSPART / TEFLON COATING
Outdoor/Roofing application



HSN - 73181500

Item Code	Material Description (Dia - Head Size X Length)	No. of pcs per Box	Rate / Pc* (₹)	Rate/ Box* (₹)
DSS001	SDS-SC-10-16 X 19mm	700	3.57	2,500
DSS002	SDS-SC-12-14 X 25 mm	500	5.52	2,760
DSS003	SDS-SC-12-14 X 35 mm	500	6.48	3,240
DSS004	SDS-SC-12-14 X 45 mm	400	7.13	2,850
DSS005	SDS-SC-12-14 X 55 mm	250	8.28	2,070
DSS006	SDS-SC-12-14 X 65 mm	200	9.50	1,900

SELF DRILLING SCREWS - DOUBLE THREAD

GREY RUSSPART / TEFLON COATING
Outdoor/Roofing Application



HSN - 73181500

Item Code	Material Description (Dia - Head Size X Length)	No. of pcs per Box	Rate / Pc* (₹)	Rate/ Box* (₹)
DSDT04	SDS-SC- DT-12-14X45 mm	400	7.15	2,860
DSDT05	SDS-SC- DT-12-14X55 mm	250	8.32	2,080
DSDT06	SDS-SC- DT-12-14X 65 mm	200	9.5	1,900
DSSW01	SDS-SC-12-14X25-W19	400	8.13	3,250



NEW PRODUCT LAUNCH

TATA AGRICO CARPENTRY NAILS

HSN - 73170013



Item Code	Material Description	No. of pcs per Box	Rate/Box* (₹)
TN0306	TATA-AG-NAIL-BOX-4030-2KG X 12	12	300
TN0406	TATA-AG-NAIL-BOX-0406-2KG X 12	12	300
TN0506	TATA-AG-NAIL-BOX-0506-2KG X 12	12	300
TN0606	TATA-AG-NAIL-BOX-0606-2KG X 12	12	300
TN1508	TATA-AG-NAIL-BOX-1508-2KG X 12	12	300
TN0208	TATA-AG-NAIL-BOX-0208-2KG X 12	12	300
TN2508	TATA-AG-NAIL-BOX-2508-2KG X 12	12	300
TN0308	TATA-AG-NA IL-BOX-0308-2KG X 12	12	300
TN0408	TATA-AG-NAIL-BOX-0408-2KG X 12	12	300
TN1509	TATA-AG-NAIL-BOX-1509-2KG X 12	12	300
TN0209	TATA-AG-NAIL-BOX-0209-2KG X 12	12	300
TN2509	TATA-AG-NAIL-BOX-2509-2KG X 12	12	300
TN0309	TATA-AG-NAIL-BOX-0309-2KG X 12	12	300
TN1510	TATA-AG-NAIL-BOX-1510-2KG X 12	12	300
TN0210	TATA-AG-NAIL-BOX-0210-2KG X 12	12	300
TN2510	TATA-AG-NAIL-BOX-2510-2KG X 12	12	300
TN0310	TATA-AG-NAIL-BOX-0310-2KG X 12	12	300
TN1511	TATA-AG-NAIL-BOX-1511-2KG X 12	12	300
TN0211	TATA-AG-NAIL-BOX-0211-2KG X 12	12	300
TN2511	TATA-AG-NAIL-BOX-2511-2KG X 12	12	300
TN0311	TATA-AG-NAIL-BOX-0311-2KG X 12	12	300
TN1512	TATA-AG-NAIL-BOX-1512-2KG X 12	12	300
TN0212	TATA-AG-NAIL-BOX-0212-2KG X 12	12	300
TN2512	TATA-AG-NAIL-BOX-2512-2KG X 12	12	300
TN0312	TATA-AG-NAIL-BOX-0312-2KG X 12	12	300

TATA AGRICO CONCRETE NAILS

HSN - 73170013



Item Code	Material Description	No. of pcs per Box	Rate/Box* (₹)
CNB103	AGRICO-CON-NAIL-3.5X1"(25mm)	20	280
CNB154	AGRICO-CON-NAIL-4.0X1.5"(38mm)	20	280
CNB204	AGRICO-CON-NAIL-4.25X2"(50mm)	20	280
CNB254	AGRICO-CON-NAIL-4.25X2.5"(63mm)	20	280
CNB305	AGRICO-CON-NAIL-5 X 3.0"(75mm)	20	280

TATA AGRICO CARPENTRY NAILS (FINER SIZE NAILS)

HSN - 73170013



Item Code	Material Description	No. of pcs per Box	Rate/Box* (₹)
TN0113	TATA-AG-NAIL-0113-2KG X 12	20	350
TN1513	TATA-AG-NAIL-1513-2KG X 12	20	350
TN1713	TATA-AG-NAIL-1713-2KG X 12	20	350
TN0114	TATA-AG-NAIL-0114-2KG X 12	20	350
TN1514	TATA-AG-NAIL-1514-2KG X 12	20	350
TN0214	TATA-AG-NAIL-0214-2KG X 12	20	350
TN2514	TATA-AG-NAIL-2514-2KG X 12	20	350
TN0314	TATA-AG-NAIL-0314-2KG X 12	20	350

OUR PRODUCT RANGE

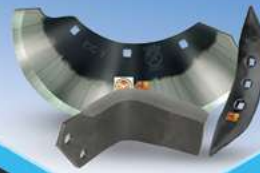
Hand Tools



Agri Tools



Mechanized Consumables



Welding Rods



Abrasive Wheels



Self Drilling Screws



TATA AGRICO

12th floor, Tata Centre, 43 Jawaharlal Neheru Road Kolkata 700 071, India
Ph: 91 33 2224 8661/3475, FAX 91 33 2288 8850
E-mail: agricomarketplace@tatasteel.com

www.tataagrigo.com

Toll free helpline: **1800 108 8282**

 Join us on **officialtataagrigo**

 Follow us on **officialtataagrigo**

 Follow us on **@Agricotata**